



NATIONAL ULR NETWORKING EVENT

***5TH - 6TH NOVEMBER 2025
LEONARDO ROYAL HOTEL, BRIGHTON WATERFRONT***



#CWULearn25

 @cwueducation

 @cwuequalityed.bsky.social

 CWU Equality and Education

education.cwu.org

EXPANDING HORIZONS THROUGH EDUCATION IS A KEY PRIORITY

I want to welcome all Union Learning Reps to this networking event. Education is a core pillar of the trade union movement and an essential part of our mission to empower our members in both the workplace and their communities.

It is particularly important to continue to develop education opportunities for our members, in a time where we are facing historic challenges in our movement and in our wider society, particularly regarding the growth of the far-right and Reform UK. Their so-called support for workers is completely hollow and their divisive agenda seeks to pit worker against worker to drive down power in the workplace. We should be under no illusion what a Reform government will mean for trade union rights. The councils where they won control a few months ago are already seeing unprecedented attacks on unions and workers. It is essential that every union stands up to their agenda, if our movement is to survive.

Education is a key part of the fightback against the agenda of far-right politicians. Where they seek to take advantage of the division and poverty in our society, we must ensure that trade union members are fully-equipped to push back on these false solutions. That is why it is so important that we discuss issues like the impact of AI in the workplace, mental health and gambling harm, as well as discussing the benefits of a diverse and accepting society. Many perceive the work of trade unions as being limited to the industrial sphere but we know that the way to make a real and lasting change on society is to encourage our members to expand their horizons and campaign for change across our society, not just in the workplace.

I know that the union has faced challenges in recent years, with cuts to funding for union learning and a challenging environment in many of our core industries. This means it is even more important that members get involved in our education initiatives and encourage others to do so, to ensure we can fully support the breadth of talent within our union and create opportunities for all of the people we represent.

Education will remain a key priority for the CWU in the years to come and I thank all ULRs for the work you do, both in your branch and in your region.

In Solidarity,

Dave Ward,
General Secretary



JUSTICE IS THE GOAL, SOLIDARITY IS THE TOOL, EDUCATION IS THE KEY!

WELCOME TO THE NATIONAL ULR NETWORKING EVENT

We come together this year facing many challenges. While some seek to divide our communities, we choose solidarity. Because trade unionism is built on collective strength, shared purpose, and the belief that we are stronger together.

In today's economic and political climate, trade union education is essential. Government policies have failed higher education. They've made it bureaucratic, expensive, and increasingly inaccessible to working people. Lifelong learning should be a right, not a privilege. That's why our union-led education matters. It gives our members and reps real opportunities to learn new skills, grow confidence, and shape their futures – regardless of background or income.

Despite the challenges posed by the devolution of the Adult Education Budget, demand remains strong. Across the country, branches and regions are launching inspiring learning initiatives.

The agenda for this year's event reflects our commitment to lifelong learning. We have a full agenda and will be sharing ideas and resources throughout the day. We'll explore opportunities for closer collaboration with local government partners and organisations like the Postal Museum and Woodcraft Folk, who we'll be hearing from today. We'll also be discussing

key issues affecting our industries and communities – such as AI, mental health, and domestic violence – focusing on how education can be a powerful tool.

I want to thank all our Union Learning Reps. Your dedication helps build a stronger, more united movement. You are the backbone of our learning network, and your work is transforming lives every single day.

Education doesn't just prepare us for the future – it brings us together, strengthens our union, our communities, and helps build better lives for us all. Let's keep learning, keep organising, and keep building the future our members deserve.

In Solidarity,

Kate Hudson,
Head of Equality,
Education &
Development



JUSTICE IS THE GOAL, SOLIDARITY IS THE TOOL, EDUCATION IS THE KEY!

ULR NETWORKING EVENT

DAY 1: WEDNESDAY 5th NOVEMBER 2025

12.00	Registration
13.00	Chair's Welcome: Paul Dovey
13.10	AI Project: Phil Cherrington & Caitlin Lloyd
13.30	Mental Health Workshops: Ady Prins
13.50	CWU – TUC Assured Badges: Anna Kalsi
14.10	Creating An Event Within The Workplace: George White & Ashish Parmar
14.40	Woodcraft Folk: Lloyd Russell-Moyle & Lionel Sampson
15.10	Tea And Coffee
15.30	I Choose Freedom: Louise Cook & Colin Fanning
15.50	Postal Museum: Andrea Dumbrell & Sandra Absalom
16.10	Working With Local Government: Adrian Ryan & Rupinder Panesar
16.30	Ken McKenzie Award: Kate Hudson
17.00	Thank You & Close

DAY 2: THURSDAY 6th NOVEMBER 2025

09.00	Gambling Harm Reduction: Drew Watson
11.00	Tea and Coffee
11.20	Immigration: Ali Moosa
12.20	The Far Right: Adam Alarakia
13.20	Closing Comments: Kate Hudson
13.30	Close

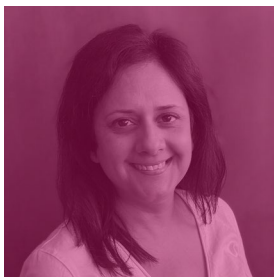
NOTES PAGE

MAKE NOTES FROM THE SPEAKERS TO TAKE BACK TO YOUR BRANCH

[illegible]

JUSTICE IS THE GOAL, SOLIDARITY IS THE TOOL, EDUCATION IS THE KEY!

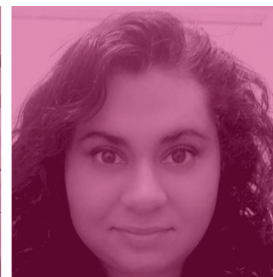
GUEST SPEAKERS & STALLS



Anna Kalsi **TUC E-Learning Officer**

Anna Kalsi is an experienced educator and digital learning specialist with almost two decades of service in the TUC Education team. Anna plays a central role in developing, coordinating, and delivering high-quality digital training for trade union representatives across the UK.

She leads on the TUC's Digital Accreditation Programme, ensuring that union reps gain nationally recognised accreditation through accessible and innovative online pathways. Anna also oversees course development and webinar production, working closely with tutors and union partners to create engaging learning experiences that meet the needs of a diverse and evolving workforce.



Adrian Ryan & Rupinder Panesar **GLA Union Learning Project**

Adrian became a union rep at the age of 18 and attended the first ULR course in Sussex in 2001. He went on to run one of the first PCS learning centres. In 2005 he joined the TUC Learning Services team (later unionlearn), where he held a variety of roles. He then became a support worker for ULF projects, supporting the CWU project for several years. When the ULF funding ended in 2021 he became a training officer for Brighton and Hove City Council. In 2023 he joined the Greater London Authority to lead the pilot London Union Learning Project, which supports a number of CWU workplaces. Adrian has a passion for learning and supporting people, especially those in insecure or low paid work and has seen first hand how learning can change people's lives.

Rupinder is the GLA London Union Learning Programme Senior Project Officer. She became a rep at 17 to represent the Saturday staff at the library she worked at, when they realised they were being paid less than the weekday staff for the same shifts. She went on to be an active Unison rep in Local Government, representing on a national level under various roles such as Young members, Black and Women's Rep. Enjoying her reps training, she went on to train as a teacher, doing her PGCE to become a TUC Tutor at West Thames College in West London. Rupinder then went on to work at WEA as an Area Manager with a focus on unions and empowering people to get into good work. She also set up the WEA Union Committee which supports unions to bring learning into the workplace.

GUEST SPEAKERS & STALLS



Louise Cook: ***I Choose Freedom***

I Choose Freedom provides refuge and a path to freedom to adult and child survivors fleeing domestic abuse. Their communal and individual refuges provide shelter, care and advocacy for over 100 adults and 150 children each year. Survivors in their care are the highest risk, those at risk of murder if they remained in the family home.

Leaving situations of domestic abuse takes immense courage. Leaving behind everything they know, survivors arrive with little, often nothing but the clothes they are wearing. For most survivors, refuge is a last resort. However, once there, they are safe, secure and receive the practical and emotional support they need. Within refuge, survivors can recover, begin healing and be empowered to rebuild their lives free from abuse.

Louise is Trusts and Fundraising Manager at I Choose Freedom. She leads supporter communication, keeping donors, fundraisers and volunteers up to date and galvanising additional community support. She is committed to elevating survivor voices to ensure a wide diversity of experiences are represented and heard.

With lived experience of domestic abuse and a background in supporting survivors of sexual assault, Louise has an in-depth understanding of issues around gendered violence. She is particularly passionate about raising awareness of the need for greater investment in lifesaving refuge provision.



Andrea Dumbrell: ***Postal Museum***

The Postal Museum is an independent museum and archive in London which tells the story of British postal communication and its impact on global society, from the reign of Henry VIII to the present day. The museum hosts interactive and family-friendly permanent and temporary exhibitions, special events, learning activities, modern research facilities, a shop and cafe. The collection features over 60,000 objects including vehicles, uniforms, pillar boxes, maps and stamps. It is also home to Mail Rail, London's hidden Post Office underground railway, reopened as a visitor experience in 2017.

Andrea Dumbrell has worked with a range of communities throughout her museum career and is now Community Programmes Producer (Postal Workers) at The Postal Museum. She focuses on engaging with postal workers, both in London and further afield. She is committed to ensuring that postal workers are represented in both the collections and activities of the museum. She has recently been working in partnership with the ULR at Swindon Mail Centre on a collaborative project with postal workers which resulted in an exhibition at the Mail Centre.

GUEST SPEAKERS & STALLS



Lloyd Russell-Moyle: ***Woodcraft Folk***

Lloyd grew up in the Woodcraft Folk as a child and later became both an adult leader and National Chair of the organisation. As Chair, he led work on developing education packs to help young people learn about the right to strike, and was part of the movement when it mobilised young people on anti-war and anti-austerity demonstrations.

He went on to work in Woodcraft Folk's International Office, creating educational resources on climate change, sexuality, and peer support, before holding professional roles with the National Youth Agency, the European Union, and the United Nations focused on youth work and participation. Lloyd was later elected as a Member of Parliament, supported by Trade Unions including the CWU, and after fifteen years away has returned to Woodcraft Folk as General Secretary (CEO). He now leads the organisation's work to strengthen political education, expand group activity, and grow the movement for future generations.



Drew Watson: ***Gambling Harm Reduction***

Breakeven has been providing FREE treatment for anybody affected by gambling related harms, including the gambler, partners, family members and friends who may also be impacted for over 20 years. We work with partners around the UK to ensure that the impact of gambling harm in the UK is reduced through client focused treatment, awareness raising and education.

As the Engagement and Partnership Manager at Breakeven, Drew Watson leads outreach and education programmes – driving awareness, delivering training, and forging strategic partnerships with individuals, charities, and organisations – while also working toward systemic change across local and central government. Recent work has focused on embedding sustainable long-term policies and protections for staff and colleagues that may be affected by gambling harm, ensuring that workplaces are equipped with the knowledge and tools to support wellbeing and resilience.

GUEST SPEAKERS & STALLS



Bookmarks

Where do you go when you want to buy a book?
A union-busting corporation or a socialist bookshop?

Bookmarks is the largest socialist bookshop in Britain. And we don't just sell from our shop in London, we go out and about to provide bookstalls at events across the country, from Tolpuddle to major demonstrations.

We send books across the world and offer a full mail order service for individuals and trade unions. Bookmarks look forward to meeting attending and servicing their socialist reading needs



**GENERAL FEDERATION
OF TRADE UNIONS**

GFTU

The General Federation of Trade Unions was established in 1899 and is a democratic organisation responsive to the needs of affiliated trade unions. Like unions, we aim to improve the lives of working people and their communities.

Our federation of trade unions and the Educational Trust (GFTUET) offers a range of support from; an exceptional programme of online and face to face trade union activist courses, leadership and management training, to detailed campaigns, organising and specialist research support for all unions, to developing professional support for General Secretaries and other professional groups such as Finance and Education officers.

Our federation includes a joint membership of over half a million members, from several union affiliates. In 2024 we are celebrated our 125th anniversary, focusing on our founding principles; education, solidarity, and unity in action.

GUEST SPEAKERS & STALLS



WEA

Founded in 1903, our mission is to bring adult education within reach of everyone who needs it. We continue to empower adults by bringing great teaching to local communities across England and Scotland, reaching tens of thousands of learners each year. This could be in a local venue near you, or online via your computer, tablet or phone.

At the WEA, we bring learning to where it's needed most, communities not served by traditional education, individuals furthest from opportunity, and adults seeking more than just a qualification.

We believe that lifelong learning should not just be about gaining skills for work, but also about building resilience, confidence, and connection.

As a national educational charity, we don't simply respond to policy, we respond to people. In a landscape where adult education funding is shrinking and policy is increasingly focused on narrow definitions of skills, we see every day how Tailored Learning offers a wider, deeper solution to the most pressing challenges of our time including mental health, loneliness, economic inactivity, and community solidarity.

JUSTICE IS THE GOAL, SOLIDARITY IS THE TOOL, EDUCATION IS THE KEY!

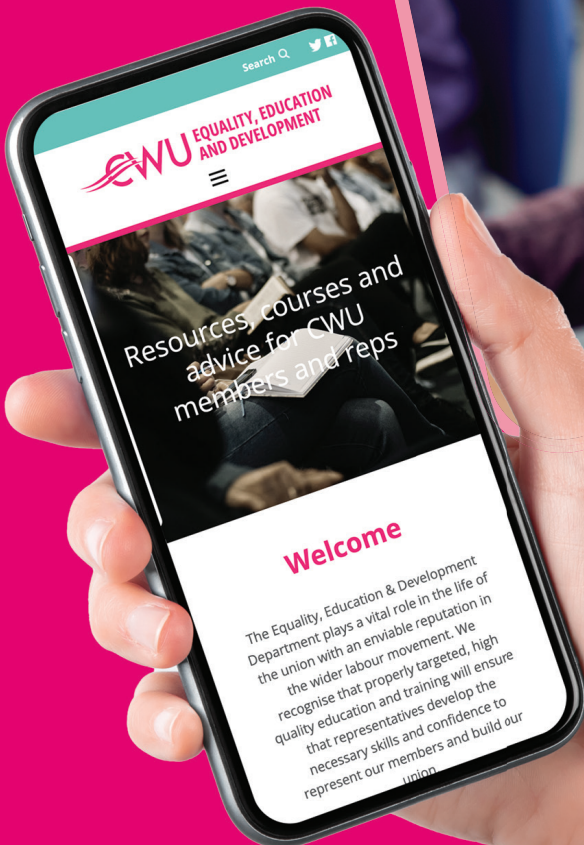
***VISIT THE CWU EQUALITY, EDUCATION
AND DEVELOPMENT WEBSITE AND ACCESS
RESOURCES, COURSES AND ADVICE
FOR CWU MEMBERS AND REPS...***



EQUALITY



EDUCATION



DEVELOPMENT

education.cwu.org





CWU 150 The Broadway, Wimbledon, London, SW19 1RX
email: info@cwu.org Tel: 020 8971 7200 Fax: 020 8971 7300 General Secretary: Dave Ward

X @DaveWardGS

f The Communications Union

X @CWUNews

#TheCWU

CWU.ORG